

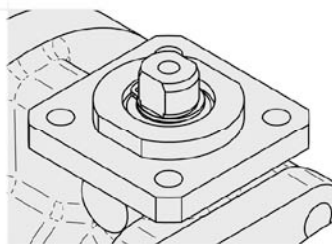


BAC VALVES

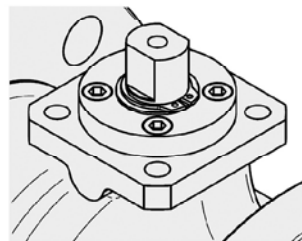
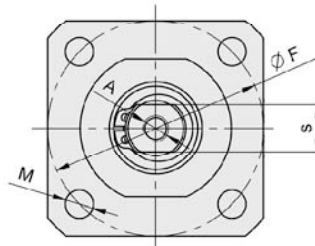
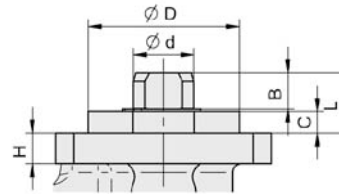
DIMENSIONES SALIDA DE EJE
BARE STEM DIMENSIONS

DT-BV14 Rev.0

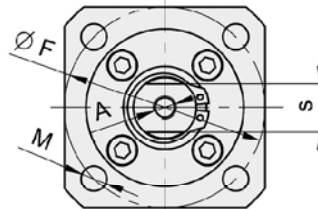
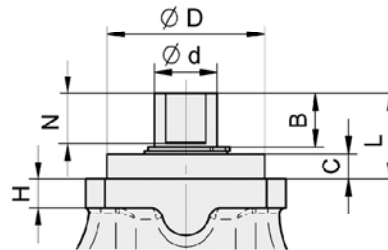
FB, FB-L, FB-M, FR



DN 15 - 1/2" hasta DN 40 - 1 1/2"
DN 15 - 1/2" up to DN 40 - 1 1/2"



DN 50 - 2" hasta DN 400 - 16"
DN 50 - 2" up to DN 400 - 16"

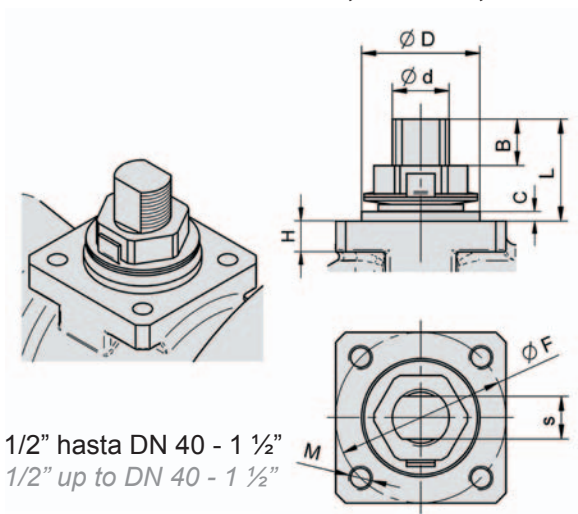


		ISO 5211	Ø D	Ø F	C	Ø d	s	A	B	Ø M	N	L	H
15	1/2"	F05	35	50	4	10	7	M5	6.5	6.5	-	11	6
20	3/4"	F05	35	50	4	12	9	M6	6.5	6.5	-	11	6
25	1"	F05	35	50	5	14	11	M6	8.5	6.5	-	14	7
32		F05	35	50	6	18	14	M8	10	6.5	-	17	8
40	1 1/2"	F05	35	50	6	18	14	M8	10	6.5	-	17	8
50	2"	F07	55	70	9	22	17	M8	11.5	9	-	22.8	10
65		F07	55	70	9	22	17	M8	11.5	9	-	22.8	10
80	3"	F10	70	102	11	28	22	M10	21.5	11	-	35	12
100	4"	F10	70	102	11	28	22	M10	21.5	11	-	35	12
125		F12	85	125	14	36	27	M12	27.5	13	-	45	16
150	6"	F12	85	125	14	36	27	M12	27.5	13	-	45	16
200	8"	F14	100	140	14	45	36	M16	37	17.5	-	53	16
250	10"	F14	100	140	17	48	36	M16	42.5	17.5	36	63	18
300	12"	F16	130	165	20	60	46	-	54	21.5	46	78	21
350	14"	F25	200	254	22	72	55	-	62	8 x 17.5	55	88.5	20
400	16"	F25	200	254	22	72	55	-	62	8 x 17.5	55	88.5	20

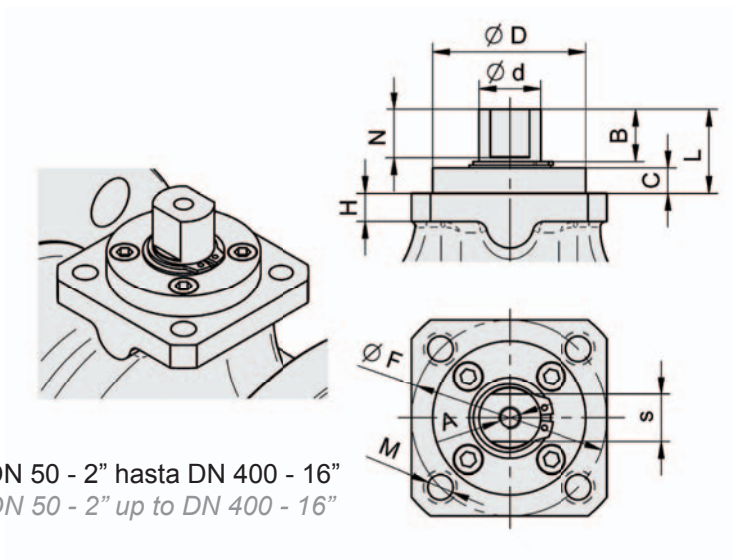


DT-BV14 Rev.2

FB, FB-T, FB-L, FB-M, FR, Capi



DN 15 - 1/2" hasta DN 40 - 1 1/2"
DN 15 - 1/2" up to DN 40 - 1 1/2"



DN 50 - 2" hasta DN 400 - 16"
DN 50 - 2" up to DN 400 - 16"

		ISO 5211	Ø D	Ø F	C	Ø d	s	A	B	Ø M	N	L	H
15	1/2"	F03s	25	36	2	M10	7	-	8	M5	-	18	5
20	3/4"	F03	25	36	2	M12	9	-	10.5	M5	-	22	5
25	1"	F04	30	42	2	M14	11	-	13	M6	-	27	6
32	1 1/4"	F05	35	50	2	M18	14	-	16	M6	-	33	6.5
40	1 1/2"	F05	35	50	2	M18	14	-	16	M6	-	33	6.5
50	2"	F07	55	70	9	22	17	M8	19	M8	17	30	10
65		F07	55	70	9	22	17	M8	19	M8	17	30	10
80	3"	F10	70	102	11	28	22	M10	26	M10	22	40	12
100	4"	F10	70	102	11	28	22	M10	26	M10	22	40	12
125		F12	85	125	14	36	27	M12	32.5	M12	27	50	16
150	6"	F12	85	125	14	36	27	M12	32.5	M12	27	50	16
200	8"	F14	100	140	17	48	36	M16	42.5	M16	36	63	18.5
250	10"	F14	100	140	17	48	36	M16	42.5	17.5	36	63	18.5
300	12"	F16	130	165	20	60	46	-	54	21.5	46	78	21
350	14"	F25	200	254	22	72	55	-	62	8 x 17.5	55	88.5	21
400	16"	F25	200	254	22	72	55	-	62	8 x 17.5	55	88.5	21



VALORES DE PARES PARA CONDICIONES ESTÁNDAR (Nm)

VALUES OF TORQUES FOR STANDARD CONDITIONS (Nm)

Agua limpia, asientos PTFE MOD., temperatura ambiente - Clean water, PTFE MOD seats, room temperature

DIMENSION VÁLVULA VALVE SIZE		DE CERRADO A ABIERTO - FROM CLOSE TO OPEN							MAX. PAR PERMITIDO DEL EJE MAX. ALLOWABLE STEM TORQUE SS 316
		PRESIÓN DIFERENCIAL (BAR) DIFERENCIAL PRESSURE (BAR)							
DN	NPS	PN 16-25, CLASS 150							Nm
		6	10	16	20				
15	1/2	5	5	5	5				18
20	3/4	7	7	7	7				36
25	1	8	8	8	8				63
32		20	20	20	20				135
40	1 1/2	21	22	22	22				135
50	2	32	33	33	34				264
65		40	43	48	51				264
80	3	96	99	105	109				559
100	4	122	139	165	182				559
125		191	197	206	212				1099
150	6	285	319	370	404				1099
200	8	467	506	570	617				2604
250	10	840	914	1024	1098				2604
300	12	1101	1260	1500	1660				5279
350	14	1421	1692	2100	2372				9067
400	16	2750	3250	4000	4500				9067
DN	NPS	PN 40, CLASS 300							Nm
		6	10	16	21	31	42	50	
15	1/2	5	5	5	5	5	5	5	18
20	3/4	7	7	7	7	7	8	8	36
25	1	8	8	9	9	9	9	10	63
32		20	20	20	20	20	20	20	135
40	1 1/2	21	22	22	22	23	24	25	135
50	2	32	33	33	34	35	37	38	264
65		40	43	48	52	60	68	74	264
80	3	97	108	124	138	165	196	218	559
100	4	203	208	217	224	240	258	272	559
125		264	271	282	291	309	329	343	1099
150	6	372	420	491	551	669	800	895	1099
200	8	535	579	652	720	878			2604
250	10	840	914	1024	1116	1300			2604
300	12	1101	1260	1500	1700	2100			5279
350	14	1421	1692	2100	2440	3120			9067

FACTORES EN RELACION A LA POSICIÓN DE LA VÁLVULA

Par arranque desde abierto :70%
 Par de giro :50%
 Par final cierre :65%
 } valor de la tabla

FACTORS IN RELATION TO VALVE POSITION

Break away from open :70%
 Runnig valve :50%
 Reseating valve :65%
 } from table value

FACTORES PARA DIFERENTES MATERIALES DE ASIENOS

PTFE MOD. + 25% CARB. :x 1.35
 PEEK :x 1.75

FACTORS FOR OTHERS SEAT MATERIALS

PTFE MOD. + 25% CARB. :x 1.35
 PEEK :x 1.75

FACTORES DE SEGURIDAD PARA DIMENSIONES DE ACTUADORES

Para condiciones estándar :x 1.5
 Para condiciones severas :x 2
 Larga inactividad :x 2 mínimo

SAFETY FACTORS FOR ACTUATOR SIZING

For standard conditions :x 1.5
 For severe conditions :x 2
 Long inactivity :x 2 minimum

Nota: Se aconseja que las pares de accionamientos.

Note: It is advisable that valves should be routinely actuated. Valves not operated for long periods of time could cause very highed torques performance.